



Xintu Photonics Co., Ltd.

Address: 6F NO.1 building Cai mao Zone ,756# Qi' an Road.
Gaishan Town, Cangshan Area, Fuzhou, Fujian, P. R. CHINA

Tel: 0086-591-88194580 Fax: 0086-591-88194580-814
Website: www.tucsen.com Email: support@tucsen.com

"TUCSEN" is registered trademark of Xintu Photonics Co., Ltd.

H Series
Scientific Camera
2013

ISH1000 & 500 & 300

User-friendly Camera

ISH1000, ISH500 and ISH300 cameras are Tucsen new generation routine cameras with effective resolution 10.0MP, 5.0MP and 3.0MP. They offer Plug-and-Play compatibility and come with user-friendly, efficient imaging software. They are another good choice for research, medicine, education and industry applications.



3.0-10.0 MP
Resolution

USB2.0
High speed transfer

ISCapture
Application software

Compatible
Windows xp/Vista/7/8

Support
Twain
DirectShow

Fast Live Image



ISH1000/ 500/ 300 produce high speed live images for various applications. You can easily setup or focus your samples. They ensure excellent performance in education, clinical and industry areas.

USB2.0 Plug-and-Play

Plug-and-Play compatibility allows you to connect more than one cameras in one PC at the same time. If another camera is demanded, you only need to plug it in your computer and use it.



Free imaging software and 3rd party software compatibility

ISH1000/500/300 comes with free imaging software. The easy-to-use and intuitive user interface guides you to acquire high quality images simply. And the mighty processing functions provide strong support for your scientific research. Furthermore, Twain and DirectShow interface allow 3rd party software applications to setup and control ISH1000/500/300 cameras – greatly increases your software options.



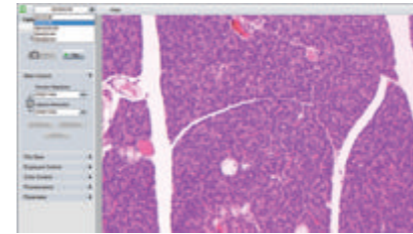
ISCapture

ISCapture is a high-performance professional imaging software. It explores the whole potential of professional Tucsen cameras. Furthermore, it also possesses powerful image processing, combination and measurement functions.

With easy-to-use and intuitive user interface and simple operations, ISCapture helps you perform image acquisition and advanced image processing with ease. It is a completely free software. You can get the upgraded version software and enjoy the great new features at the first time without paying any extra charge.



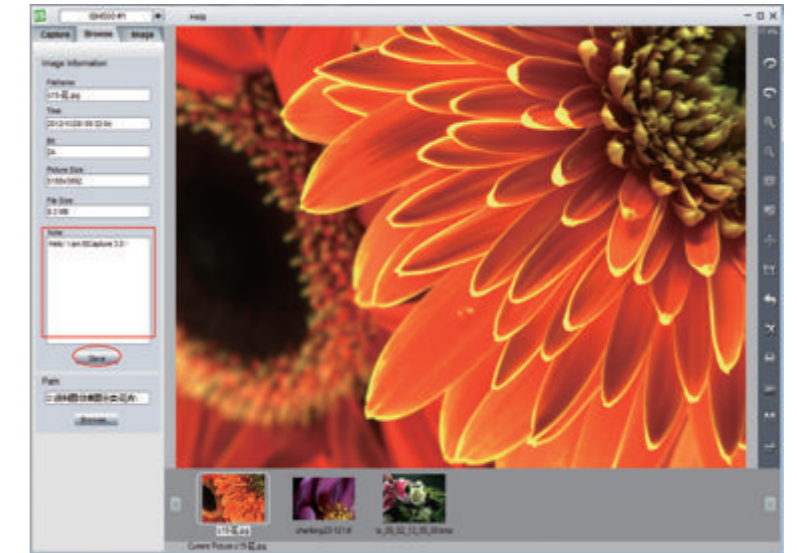
Camera Control & Image Management



ISCapture allows you the completely control of Tucsen cameras, including camera basic control like resolution and white balance; exposure control like integration time, gain, data width; and color control like color enhancement, contrast, saturation etc.

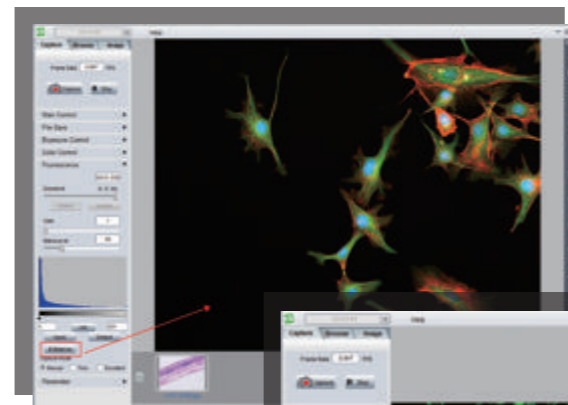


Remarkable camera correction capacity, flat fielding is only one of them.

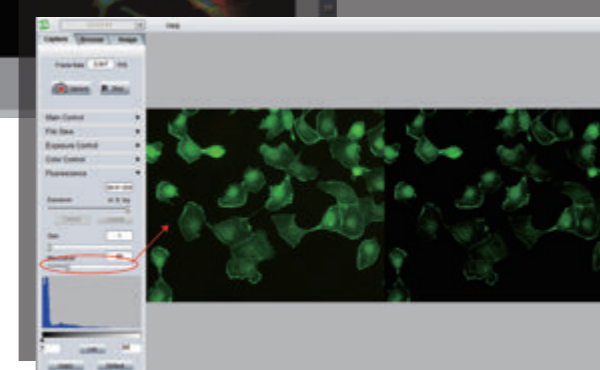


Excellent solution for image management

Fluorescence Imaging



Fluorescence imaging is more and more widely use. ISCapture provides great support for this application. Black level function makes your camera more sensitive.



In fluorescence imaging, most area of the image is dark. In such case, the white balance is not able to give the correct color reference for the images. How can you do the color correction for the images? Black Balance helps you solve this.



ISCapture includes 4 parts:

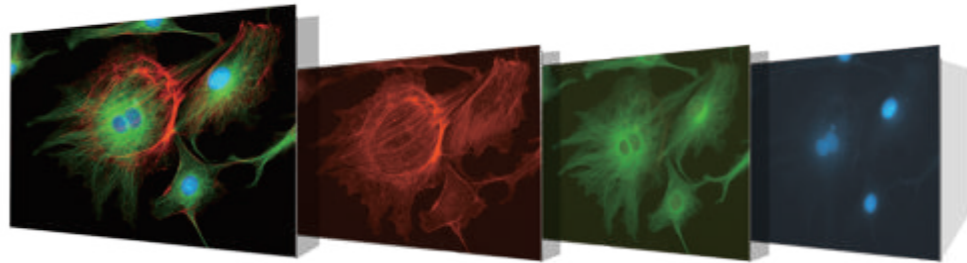
- 1.Camera control & image management
- 2.Fluorescence imaging
- 3.Image processing
- 4.Measurement



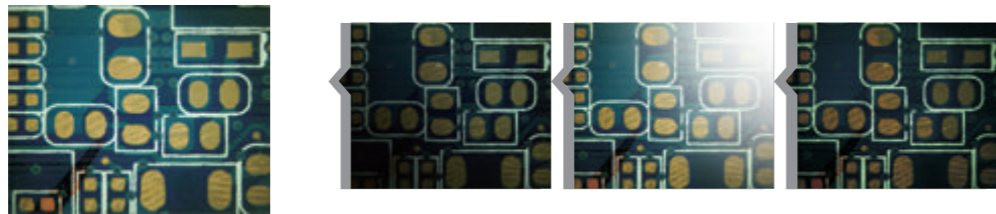
Image Processing

ISCapture offers innovative image processing functions including fluorescence combination, HDR and Extended Depth of Focus.

Fluorescence Combination



High Dynamic Range(HDR)

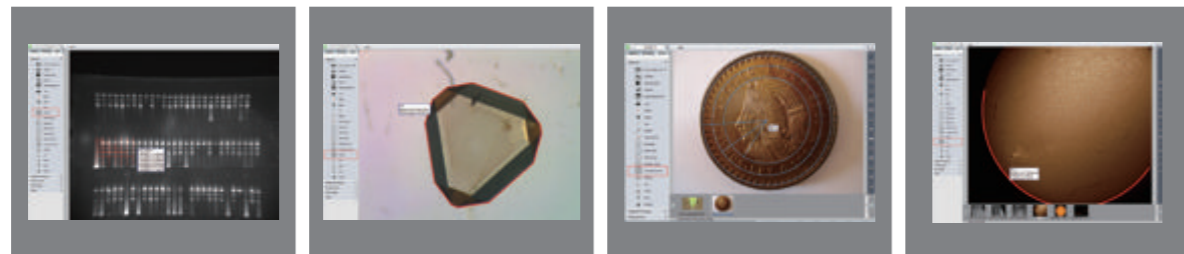


Extended Depth of Focus



Measurement

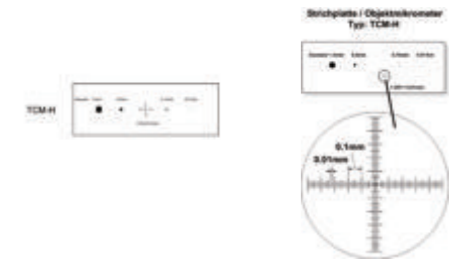
Accurate and advanced measurements are suitable for almost any application and allow you to carry out your work easily .



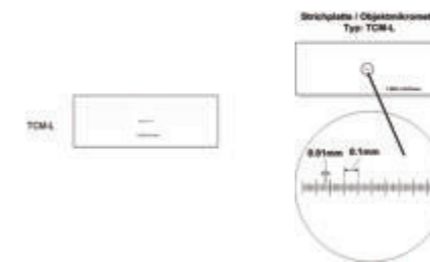
Calibration Slide



TCM-H Optional Millimeter Calibration Slide



TCM-L 0.01 Millimeter Calibration Slide



TCM-S 0.1 Millimeter Calibration Slide



Accessory Pack

Tucsen Professional Camera Pack



	 Research orient					 USB3.0 Camera			 USB2.0 Camera			
	H-694ICE- II	H-694ICE	H-694CICE	H-674ICE- II	TCH-1.4ICE- II		X1000	X500	ISH1000	ISH500	ISH300	ISH130BW
Sensor	ICX694AL	ICX694AL	ICX694AQ	ICX674ALG	Sony ICX285AQ		Micon MT9J001	Micon MT9P031	Micon MT9J001	Micon MT9P031	Micon MT9T001	Micon MT9M001
Color/monochrome	Monochrome	Monochrome	Color	Monochrome	Monochrome		Color	Color	Color	Color	Color	Monochrome
Sensor size	1"	1"	1"	2/3"	2/3"		1/2.3"	1/2.5"	1/2.3"	1/2.5"	1/2"	1/2"
Pixel size(μm)	4.54×4.54	4.54×4.54	4.54×4.54	4.54×4.54	6.45×6.45		1.67×1.67	2.2×2.2	1.67×1.67	2.2×2.2	3.2×3.2	5.2×5.2
Effective pixels	6.1MP	6.1MP	6.1MP	2.8MP	1.4MP		10.0MP	5.0MP	10.0MP	5.0MP	3.0MP	1.3MP
Max.resolution (H×V)	2736×2200	2736×2200	2736×2200	1920×1460	1360×1024		3664×2748	2592×1944	3664×2748	2592×1944	2048×1536	1280×1024
Scan mode	Progressive	Progressive	Progressive	Progressive	Progressive		Progressive	Progressive	Progressive	Progressive	Progressive	Progressive
Shutter	Electronic shutter	Electronic shutter	Electronic shutter	Electronic shutter	Electronic shutter		Rolling shutter	Rolling shutter	Rolling shutter	Rolling shutter	Rolling shutter	Rolling shutter
Frame rate	3.3fps(2728 × 2192)	3.3fps(2728 × 2192)	3.3fps(2728 × 2192)	7fps(1912 × 1452)	13fps(1360 × 1024 Full Frame)		7fps(3856 × 2764)	15fps(2592 × 1944)	3fps(3856 × 2764)	5fps(2592 × 1944)	10fps(2048 × 1536)	20fps(1272 × 1016)
	6.2fps (1620 × 1072 Cropping)	6.2fps (1620 × 1072 Cropping)	6.2fps (1620 × 1072 Cropping)	17fps (952×720 2×2Bin)	15fps (680 × 520, 2 × 2Bin)		37fps(1280 × 960)	37fps(1280 × 960)	8fps(1832 × 1370)	21fps(1280× 960)	25fps (1024 × 768)	—
	8.8fps (1080 × 720)	8.8fps (1080 × 720)	8.8fps (1080 × 720)	—	—		94fps(640 × 480)	94fps(640 × 480)	28fps (916 × 680)	25fps (1024 × 768)	40fps (640 × 480)	—
	—	—	—	—	—		—	—	—	38fps (640 × 480)	—	—
Color depth	—	—	36 bit	—	—		24bit	24bit	24bit	24bit	24bit	24bit
A/D	12 bit	12 bit	12 bit	12 bit	12 bit		8/10 bit	8/10 bit	8 bit	8 bit	8 bit	8 bit
Exposure Control	Manual/Auto	Manual/Auto	Manual/Auto	Manual/Auto	Manual/Auto		Manual/Auto	Manual/Auto	Manual/Auto	Manual/Auto	Manual/Auto	Manual/Auto
Integration Time (S)	1ms-160min	1ms-160min	1ms-160min	1ms-160min	1ms-160min		0.001-3 sec	0.001-3 sec	0.001-1 sec	0.001-0.8 sec	0.001-0.5sec	0.001-0.5sec
White Balance	Manual/Auto	Manual/Auto	Manual/Auto	Manual/Auto	Manual/Auto		Manual/Auto	Manual/Auto	Manual/Auto	Manual/Auto	Manual/Auto	Manual/Auto
Dynamic range	69.8dB	69.8dB	69.8dB	69.8dB	67dB		56dB	60dB	56dB	60dB	54dB	54dB
Operating temperature	0-60℃	0-60℃	0-60℃	0-60℃	0-60℃		0-60℃	0-60℃	0-60℃	0-60℃	0-60℃	0-60℃
Cooling	Peltier Class II (-25℃)(controllable)	Peltier Class I (-10℃)	Peltier Class I (-10℃)	Peltier Class II (-25℃)(controllable)	Peltier Class II (-25℃)		—	—	—	—	—	—
Operating humidity	45%-85%	45%-85%	45%-85%	45%-85%	45%-85%		45%-85%	45%-85%	45%-85%	45%-85%	45%-85%	45%-85%
Storage temperature	-20-70℃	-20-70℃	-20-70℃	-20-70℃	-20-70℃		-20-70℃	-20-70℃	-20-70℃	-20-70℃	-20-70℃	-20-70℃
Operating system	Windows / Linux / Mac	Windows / Linux / Mac	Windows / Linux / Mac	Windows / Linux / Mac	Windows / Linux / Mac		Windows	Windows	Windows / Linux / Mac	Windows / Linux / Mac	Windows / Linux / Mac	Windows / Linux / Mac
Optical port	C-Mount	C-Mount	C-Mount	C-Mount	C-Mount		C-Mount	C-Mount	C-Mount	C-Mount	C-Mount	C-Mount
Data interface	USB2.0	USB2.0	USB2.0	USB2.0	USB2.0		USB3.0	USB3.0	USB2.0	USB2.0	USB2.0	USB2.0